

anti-human CD14 FITC-conjugated

FITC-conjugated monoclonal antibody 18D11 to human CD14

Cat-No: **21620143**

500 µl

Clone: 18D11

Specificity: The 18D11 antibody recognizes the CD14 antigen (LPS receptor) expressed strongly on the surface of monocytes, weakly on the surface of granulocytes, macrophages, dendritic cells and B-cells. On flow cytometry it stains > 90% of human peripheral blood monocytes. The antibody is LPS neutralising.

Isotype subclass: Mouse monoclonal IgG1

Form: The purified antibody is conjugated with Fluorescein isothiocyanate (FITC) under optimum conditions. The conjugate is purified by size-exclusion chromatography and adjusted for direct use. No reconstitution necessary

Physical state: Liquid

Buffer/Additives/Preservative: PBS containing 1% BSA and 0,09% sodium azide (pH 7.2).

Expiration date: The reagent is stable until the expiry date stated on the vial label

Storage conditions: Store at 4°C. Do not freeze. Avoid prolonged exposure to light.

Application: The 18D11 antibody is well suited for detection of CD14 in flow cytometry.

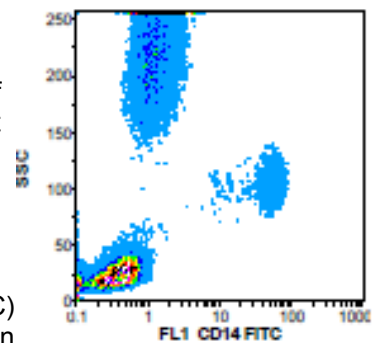
References:

D. Mason, D. et al. (eds), Leucocyte Typing 7, in press, Oxford University Press, Oxford, U.K., 2002

Background: CD14 is a 55 kDa GPI-anchored glycoprotein, constitutively expressed on the surface of mature monocytes, macrophages, and neutrophils, where serves as a multifunctional lipopolysaccharide receptor; it is also released to the serum both as a secreted and enzymatically cleaved GPI-anchored form. CD14 binds lipopolysaccharide molecule in a reaction catalyzed by lipopolysaccharide-binding protein (LBP), an acute phase serum protein. The soluble sCD14 is able to discriminate slight structural differences between lipopolysaccharides and is important for neutralization of serum allochthonous lipopolysaccharides by reconstituted lipoprotein particles. CD14 affects allergic, inflammatory and infectious processes.

Warning: Sodium azide is harmful if swallowed (R22). Keep out of reach of children (S2). Keep away from food, drink and animal feeding stuff (S13). Wear suitable protective clothing (S36). If swallowed, seek medical advice immediately and show this container or label (S46). Contact with acids liberates very toxic gas (R32). Azide compounds should be flushed with large volumes of water during disposal to avoid deposits in lead or copper plumbing where explosive conditions can develop.

This material is offered for **research use only**. Not for use in human. For in vitro use only. ImmunoTools will not be held responsible for patent infringement or other violations that may occur with the use of our products.



Attention! Cells from one healthy individual are shown. Cell populations and staining intensity may vary interindividually.

ImmunoTools Excellent Quality - Advantageously priced

Gladiolenweg 2; 26169 Friesoythe; Germany
 phone:+49-(0)4491-400997, fax:+49-(0)4491-400998, info@immunotools.com
 www.immunotools.com