

anti-human CD2 FITC-conjugated

FITC - conjugated monoclonal antibody HIT11 to human CD2

Cat-No: **21810023**

500 µl

Clone: HIT11

Specificity: The CD2 (HIT11) antibody recognizes a 50-kDa type-I single-chain transmembrane glycoprotein called LFA-2 (lymphocyte function associated antigen-2) or sheep red blood cell (SRBC) receptor. The CD2 antigen is expressed on 70-80% of peripheral blood lymphocytes and 80%-90% of thymocytes and NK cells. The primary ligand for CD2 is CD58 (LFA-3) despite binding to CD48, CD59 and CD15. The CD2 antigen plays a role in T cell signaling and in lymphocyte adhesion, and is an alternative pathway of T cell activation. There are two forms of CD2, a membrane form on cell surface and a soluble form in serum.

Isotype subclass: Mouse IgG1

Form: The purified antibody is conjugated with Fluorescein isothiocyanate (FITC) under optimum conditions. The reagent is adjusted for direct use. No reconstitution is necessary.

Physical state: Liquid

Buffer/Additives/Preservative: PBS containing 1% BSA and 0.09% sodium azide (pH 7.2)

Expiration date: The reagent is stable until the expiry date stated on the vial label

Storage conditions: Store at 4 °C. Avoid prolonged exposure to light.

Application: Flow Cytometry

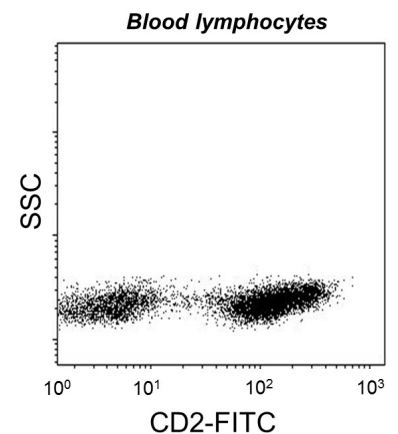
References:

Schlossman S., L. Bloumsell, W. Gilks, et al., eds. 1995.

Leucocyte Typing V: White Cell Differentiation Antigens. P246, Oxford University Press, New York.

Warning: Sodium azide is harmful if swallowed (R22). Keep out of reach of children (S2). Keep away from food, drink and animal feeding stuff (S13). Wear suitable protective clothing (S36). If swallowed, seek medical advice immediately and show this container or label (S46). Contact with acids liberates very toxic gas (R32). Azide compounds should be flushed with large volumes of water during disposal to avoid deposits in lead or copper plumbing where explosive conditions can develop.

This material is offered for **research use only**. Not for use in human. For in vitro use only. ImmunoTools will not be held responsible for patent infringement or other violations that may occur with the use of our products.



Attention! Cells from one healthy individual are shown. Cell Populations and staining intensity may vary interindividually.

ImmunoTools Excellent Quality - Advantageously priced

Gladiolenweg 2; 26169 Friesoythe; Germany

phone:+49-(0)4491-400997, fax:+49-(0)4491-400998, info@immunotools.com

www.immunotools.com