

anti-human CD3 FITC-conjugated

FITC - conjugated monoclonal antibody HIT3b to human CD3

Cat-No: **21810033**

500 µl

Clone: HIT3b

Specificity: The CD3 (HIT3b) antibody recognizes the 17-19 kD ϵ -chain of CD3 within the CD3 antigen/T cell antigen receptor (TCR) complex. The CD3 antigen is expressed in the cell cytoplasm during the early stage of T cell development and is expressed on the cell membrane at the late stage. CD3 antigen is displayed on 60-80% of normal peripheral blood lymphocytes and 60-70% of thymocytes and plays an important role in signal transduction after antigen recognition by TCR. The clone HIT3a has a strong mitogenic effect at ng level on T lymphocyte proliferation in soluble or immobilized conditions and has an immunosuppressive effect at high dose. Conversely, the clone HIT3b has a strong mitogenic effect on T lymphocytes proliferation only under immobilized condition.

Isotype subclass: Mouse IgG1

Form: The purified antibody is conjugated with Fluorescein isothiocyanate (FITC) under optimum conditions. The reagent is adjusted for direct use. No reconstitution is necessary.

Physical state: Liquid

Buffer/Additives/Preservative: PBS containing 1% BSA and 0.09% sodium azide (pH 7.2)

Expiration date: The reagent is stable until the expiry date stated on the vial label

Storage conditions: Store at 4 °C. Avoid prolonged exposure to light.

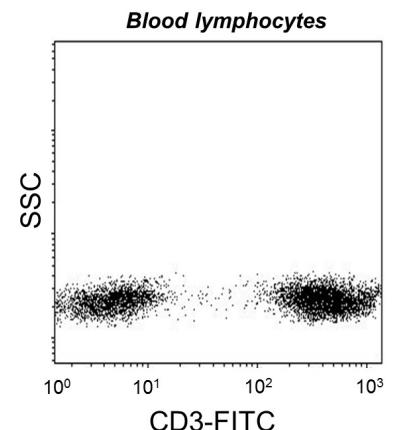
Application: Flow Cytometry

References:

- *) Shen DC. et al. 1993. ACTA Academia Medicinae Sinicae. 15(3):157
- *) Schlossman S. et al., eds. 1995. Leucocyte Typing V: White Cell Differentiation Antigens. P246, Oxford University Press, New York.
- *) Tadamitsu K. et al., eds. 1997. Leucocyte Typing VI: White Cell Differentiation Antigens. P49-52, 113-114 Garland Publishing, Inc., New York.

Warning: Sodium azide is harmful if swallowed (R22). Keep out of reach of children (S2). Keep away from food, drink and animal feeding stuff (S13). Wear suitable protective clothing (S36). If swallowed, seek medical advice immediately and show this container or label (S46). Contact with acids liberates very toxic gas (R32). Azide compounds should be flushed with large volumes of water during disposal to avoid deposits in lead or copper plumbing where explosive conditions can develop.

This material is offered for **research use only**. Not for use in human. For in vitro use only. ImmunoTools will not be held responsible for patent infringement or other violations that may occur with the use of our products.



Attention! Cells from one healthy individual are shown. Cell Populations and staining intensity may vary interindividually.

ImmunoTools Excellent Quality - Advantageously priced

Gladiolenweg 2; 26169 Friesoythe; Germany
 phone:+49-(0)4491-400997, fax:+49-(0)4491-400998, info@immunotools.com
www.immunotools.com