

## anti-human CD4 FITC-conjugated

**FITC** - conjugated monoclonal antibody HIT4c to human CD4

Cat-No: **21819043**

500 µl

**Clone:** HIT4c

**Specificity:** The CD4 (HIT4c) Antibody recognizes a 55 kDa type-I single-chain transmembrane glycoprotein. CD4 antigen is a coreceptor for HLA class II molecule and HIV (human immunodeficiency virus), which is present on 35-50% of peripheral blood lymphocytes-T helper/inducer (Th/Ti), 70-80% of thymocytes and in low density on the peripheral blood monocytes and tissue macrophages. Th/Ti helps Ig production by B lymphocytes by enhancing maturation and increasing effectiveness of cytotoxic CD8 T cells.

**Isotype subclass:** Mouse IgG2b, k

**Form:** The purified antibody is conjugated with Fluorescein isothiocyanate (FITC) under optimum conditions. The reagent is adjusted for direct use. No reconstitution is necessary.

**Physical state:** Liquid

**Buffer/Additives/Preservative:** PBS containing 1% BSA and 0.09% sodium azide (pH 7.2)

**Expiration date:** The reagent is stable until the expiry date stated on the vial label

**Storage conditions:** Store at 4 °C. Avoid prolonged exposure to light.

**Application:** Flow Cytometry

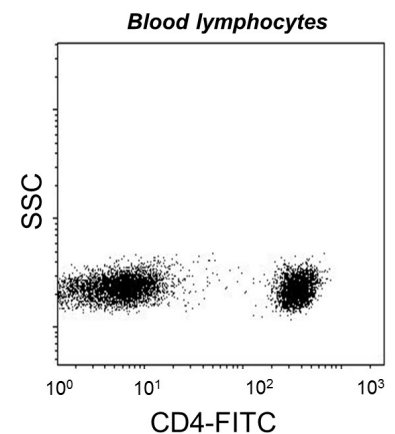
**References:**

Tadamitsu K. et al., eds. 1997.

Leucocyte Typing VI: White Cell Differentiation Antigens. P49-52, 113-114 Garland Publishing, Inc., New York.

**Warning:** Sodium azide is harmful if swallowed (R22). Keep out of reach of children (S2). Keep away from food, drink and animal feeding stuff (S13). Wear suitable protective clothing (S36). If swallowed, seek medical advice immediately and show this container or label (S46). Contact with acids liberates very toxic gas (R32). Azide compounds should be flushed with large volumes of water during disposal to avoid deposits in lead or copper plumbing where explosive conditions can develop.

This material is offered for **research use only**. Not for use in human. For in vitro use only. ImmunoTools will not be held responsible for patent infringement or other violations that may occur with the use of our products.



**Attention!** Cells from one healthy individual are shown. Cell Populations and staining intensity may vary interindividually.

**ImmunoTools** Excellent Quality - Advantageously priced

Gladiolenweg 2; 26169 Friesoythe; Germany  
phone:+49-(0)4491-400997, fax:+49-(0)4491-400998, info@immunotools.com  
www.immunotools.com