

anti-human CD3 FITC-conjugated

FITC - conjugated monoclonal antibody to CD3 (Human)

Cat-No: **21850033**

500 µl

Clone: OKT-3

Specificity: The OKT3 monoclonal antibody reacts with an epitope on the epsilon-subunit within the human CD3 complex. The OKT3 antibody has been reported to have potent immunosuppressive properties in vivo and has been proven effective in the treatment of renal, heart and liver allograft rejection. The CD3 subunits, gamma, delta, and epsilon chains, are required for proper assembly, trafficking and surface expression of the TCR complex. CD3 is expressed by thymocytes in a developmentally regulated manner and by all mature T cells. Crosslinking of TCR initiates an intracellular biochemical pathway resulting in cellular activation and proliferation.

Isotype subclass: Mouse IgG2a

Physical state: Liquid

Buffer/Additives/Preservative: PBS containing 1 % BSA and 0.09 % sodium azide (pH 7.2)

Form: The purified antibody is conjugated with Fluorescein isothiocyanate (FITC) under optimum conditions. The reagent is adjusted for direct use. No reconstitution is necessary.

Expiration date: The reagent is stable until the expiry date stated on the vial label.

Storage conditions: Store at 4 °C. Avoid prolonged exposure to light.

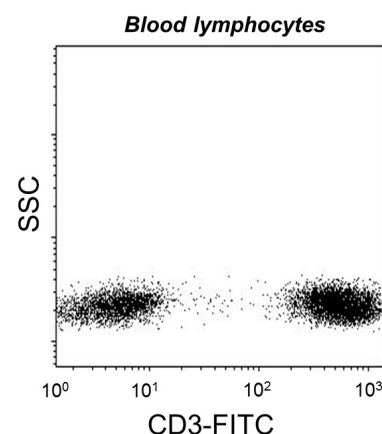
Application: Flow cytometry

References:

- 1.) Tanaka Y, Koyanagi Y, Tanaka R, Kumazawa Y, Nishimura T, Yamamoto N. Productive and lytic infection of human CD4+ type 1 helper T cells with macrophage-tropic human immunodeficiency virus type 1. *J Virol.* 1997 Jan;71(1):465-70.
- 2.) Hutchcroft JE, Tsai B, Bierer BE. Differential phosphorylation of the T lymphocyte costimulatory receptor CD28. *J Biol Chem.* 1996 Jun 7;271(23):13362-70.

Warning: Sodium azide is harmful if swallowed (R22). Keep out of reach of children (S2). Keep away from food, drink and animal feeding stuff (S13). Wear suitable protective clothing (S36). If swallowed, seek medical advice immediately and show this container or label (S46). Contact with acids liberates very toxic gas (R32). Azide compounds should be flushed with large volumes of water during disposal to avoid deposits in lead or copper plumbing where explosive conditions can develop.

This material is offered for research only. Not for use in human. For in vitro use only. ImmunoTools will not be held responsible for patent infringement or other violations that may occur with the use of our products.



Attention! Cells from one healthy individual are shown. Cell Populations and staining intensity may vary interindividually.

ImmunoTools Excellent Quality - Advantageously priced

Gladiolenweg 2; 26169 Friesoythe; Germany

phone:+49-(0)4491-400997, fax:+49-(0)4491-400998, info@immunotools.com

www.immunotools.com