

anti-human CD25

Monoclonal Antibody HI25a to CD25 (Human)

Cat-No: **21810251**

100 µg in 100 µl

Clone: HI25a

Specificity: The antibody HI25a reacts with CD25 (Interleukin-2 receptor α chain), a 55 kDa type I transmembrane glycoprotein expressed on activated B and T lymphocytes, activated monocytes/macrophages and on CD4⁺ T lymphocytes (T regulatory cells); it is lost on resting B and T lymphocytes. Antigen density of CD25 is upregulated by the stimulation of PHA, ConA and CD3 antibody.

Isotype subclass: Mouse IgG1

Form: Purified from ascites by protein-G affinity chromatography.

Purity: > 95% (by SDS-PAGE)

Physical state: Liquid

Buffer/Additives/Preservative: PBS containing 1% BSA and 0.09% sodium azide (pH 7.2)

Expiration date: The reagent is stable until the expiry date stated on the vial label.

Storage conditions: Store at 4 °C. For long-term storage aliquot and store at -20°C. Avoid freeze/thaw cycles.

Application:

Flow Cytometry

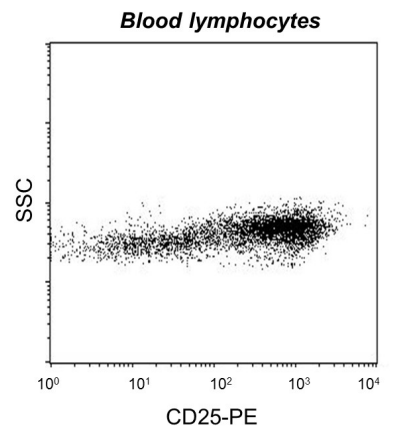
Immunohistochemistry (frozen and paraffin sections)

References: Leukocyte Typing VI. Kishimoto T. et al. (Eds.), Garland Publishing Inc. (1997).

Background: **CD25** (IL2R α , Tac) is a ligand-binding alpha subunit of interleukin 2 receptor (IL2R). Together with beta and gamma subunit CD25 constitutes the high affinity IL2R, whereas CD25 alone serves as the low affinity IL2R. CD25 expression rapidly increases upon T cell activation. The 55 kDa CD25 molecule is enzymatically cleaved and shed from the cell surface as a soluble 45 kDa s-Tac, whose concentration in serum can be used as a marker of T cell activation. Expression of CD25 indicates the neoplastic phenotype of mast cells. Humanized anti CD25 antibodies represent a useful tool to reduce the incidence of allograft rejection as well as the severity of graft versus host reaction, and radioimmunoconjugates of anti-CD25 antibodies can be used against CD25 expressing lymphomas.

Warning: Sodium azide is harmful if swallowed (R22). Keep out of reach of children (S2). Keep away from food, drink and animal feeding stuff (S13). Wear suitable protective clothing (S36). If swallowed, seek medical advice immediately and show this container or label (S46). Contact with acids liberates very toxic gas (R32). Azide compounds should be flushed with large volumes of water during disposal to avoid deposits in lead or copper plumbing where explosive conditions can develop.

This material is offered for **research use only**. Not for use in human. For in vitro use only. ImmunoTools will not be held responsible for patent infringement or other violations that may occur with the use of our products.



Attention! Cells from one healthy individual are shown. Cell Populations and staining intensity may vary interindividually.

ImmunoTools Excellent Quality - Advantageously priced

Gladiolenweg 2; 26169 Friesoythe; Germany

phone:+49-(0)4491-400997, fax:+49-(0)4491-400998, info@immunotools.com

www.immunotools.com